



## INSIDE:

### FIRSTLOOK: iNTRAXX™

Inside the ambulance of tomorrow, today!

### MEETING THE NEW STANDARDS

What do you need to know?

### THE ACETECH® APPROACH

New ways to increase operational efficiency

 **FERNO**® SOLUTIONS GUIDE



**TOGETHER**  
**WE CAN TRANSFORM**  
**EMERGENCY CARE**



# SOLUTIONS GUIDE

VOLUME 1, NO. 1

## Contents

**THE FERNO VISION**  
Introducing the Integrated  
Patient Transport System™  
**PAGE 4**

**STAIR CHAIRS AND MORE**  
Solutions that help you stop lifting in  
challenging situations  
**PAGE 18**

**VEHICLE**

**FIRSTLOOK:**  
**iN|TRAXX**  
Integrated Ambulance  
Component System  
Inside the ambulance of  
tomorrow, today!  
**PAGE 6**

### INTELLIGENCE

**ACETECH**  
Integrated Vehicle Intelligence System  
**PAGE 20**

### EQUIPMENT

**IMMOBILIZATION,  
PEDIATRICS & MORE**  
Ferno offers more solutions for every  
situation than anyone else  
**PAGE 24**

**PRODUCT SPECIFICATIONS**  
Specifications and feature comparisons  
**PAGE 30**

### SOLUTIONS

**TOP FOUR REASONS  
AMBULANCE CRASHES OCCUR**  
And how to mitigate risk of injury  
**PAGE 12**

### MEDIC

**iN|X**  
Integrated Patient Transport  
& Loading System  
**PAGE 14**

**MEETING THE NEW STANDARDS**  
SAE compliant cots and fasteners that keep  
medics and patients safe in an accident  
**PAGE 16**

## Contact Us:

**FERNO.CO.UK | +44 (0) 1274 851 999**

**iN/x**

**iN/TRAXX**



**VEHICLE**



**PARAMEDIC**



# Together, We Can Transform Emergency Care, For Life.

At Ferno, we have a vision that is **transforming the delivery of emergency care** in the ambulance and on scene. We've partnered with EMS professionals and innovators from all over the world to bring you the **Integrated Patient Transport System**, a family of solutions that focus on the **Paramedic, Vehicle,** and **Intelligence** to **increase safety** for ALL and **performance** for EMS operations.

## INNOVATION INSPIRED BY YOU.

You are passionate about the work you do, but let's face it - it's not easy. Everyday activities in EMS put you at risk for injuries that can hurt you and your service, family, and career. We created the **Integrated Patient Transport System** to effectively **eliminate patient handling injuries** and the **risks and hazards** you face in the back of a **moving vehicle**. Now you can **stop lifting, stay seated,** and **deliver care** more effectively for your patients.

## LET US SHOW YOU HOW.



INTELLIGENCE



### CRASH TESTED SAFETY

- **Dynamically crash-tested to SAE J3043** to keep equipment secure during 26g impacts
- **Provide seated and restrained delivery of care** yet reach supplies without standing up
- **Soft-Sided SafePaks** eliminate strike hazards during aggressive vehicle movements

### REDUCED PROCESSING TIME AND MAINTENANCE

- **SafePaks and pouches** are easy to remove, clean and restock for faster make ready
- **Quickly remove and replace** damaged components for minimal vehicle downtime

# FIRSTLOOK

**iN/TRAXX™** Integrated Vehicle Component System



## Delivery of Care is now Safer, More Convenient and More Efficient.

Your vehicle is as important as any equipment you use and a true transformation in delivery of care wouldn't be possible without including the ambulance itself. Ferno partnered with EMS professionals and innovators from all over the world to create the new iN/TRAXX Integrated Vehicle Component System.

iN/TRAXX introduces a whole new vision for delivering emergency care inside a modular ambulance environment, while also providing **SAE compliant safety** for providers and patients, and **reducing operating costs** for services.

### PROTECT CREWS & PATIENTS FROM INJURY

iN/TRAXX is designed to secure loose equipment and supplies inside the ambulance while allowing paramedics to deliver patient care from a seated, restrained position. This reduces the risk of death and injury during sudden impact, stops or hard maneuvers.

### IMPROVE EFFICIENCY AND LOWER COSTS

The modular system features a track wall with Equipment Mounts and SafePak™ Supply Bags. iN/Traxx modularity supports better work flows, inventory management, and shorter vehicle make ready which lowers operating costs.



SAE J3043 COMPLIANT  
**26g**  
CERTIFIED

EXCEEDS BSEN 1789  
EUROPEAN CEN STANDARDS

MODULAR SYSTEM FITS  
ANY VEHICLE TYPE

**"The system is so interchangeable,** that the sky's the limit and it gives you the flexibility of making your ambulance, your ambulance."

MIKE McCART | DEPUTY CHIEF | PULASKI COUNTY, MO AMBULANCE DISTRICT



Customise iN|TRAXX to your specific needs. From vehicle type to crew preference, iN|TRAXX works for you.



**iN|TRAXX Wall Tracks** provide a crash tested platform for easy customisation of your vehicle

- iN|TRAXX Track, (1.16m) with fixing holes **b** 048-0001
- iN|TRAXX Track, (1.16m) without fixing holes 048-0073
- iN|TRAXX Track, various End Caps available

**iN|TRAXX Mounts** securely hold your monitor, suction & other equipment, wherever you want them

- SafeMount, iN|TRAXX 048-0010
- SafeMount w/connector, iN|TRAXX **c** 048-0011
- SafeMount Connector, iN|TRAXX **d** 048-0012

- e** 048-0019
- Defib Swivel Mount, ZOLL X 048-0020
- Defib Wall & Surface Mount, ZOLL X 048-0021
- Defib Wall Mount, Lifepak 15 048-0013
- Defib Swivel Mount, Lifepak 15 048-0014
- Defib Wall & Surface Mount, Lifepak 15 048-0015
- Winemann Corpuls 3 Defib Wall Mount 048-0056
- Pneupac Ventilator mount **f** TBC
- Impact 731 Vent Mount, iN|TRAXX 048-0038
- Ventilator, HT70, iN|TRAXX 048-0052
- Laerdal® LSU Mount, iN|TRAXX **g** 048-0042
- Work Tray w/ Arm, iN|TRAXX 048-0039
- Toughbook® Mount, iN|TRAXX **h** 048-0040
- Tablet Mount, iPad®, iN|TRAXX **i** 048-0041





Track Clip, iN|TRAXX  
 Oxygen Mount, Single iN|TRAXX  
 Oxygen Mount, Triple iN|TRAXX  
 O<sub>2</sub> bottles not included

j 048-0008  
 TBC  
 1) TBC

SafePak Pouch Large Horz 048-0029  
 Pouch Mount Single, iN|TRAXX 048-0030  
 Pouch Mount Double, iN|TRAXX 048-0031

**The SAFEPAK System** puts your supplies right where you need them and keeps you in your seat

SafePak Mount, iN|TRAXX 1! 048-0022  
 SafePak, Standard Red/Blue/White @ 048-0024/59/60  
 SafePak, Small Red/Blue/White # 048-0023/77/76  
 SafePak Pouch Small 048-0026  
 SafePak Pouch Medium \$ 048-0027  
 SafePak Pouch Large Vert 048-0028

**The SafeCabs System** configurable storage cabinates

SafeCab, large (1.14m) % 048-0087  
 SafeCab, medium (80cm) 048-0086  
 SafeCab, small (54.5cm) 048-0085  
 SafeCabs depending on vehicle type come in 7,14 and 17 degrees sloping backs

/ For complete product information go to <http://www.fernoems.com/intraxxsystem>

# IN|TRAXX Components & Accessories





b

The **FERNO<sub>2</sub>**® line of emergency oxygen and airway equipment provides high quality, dependable solutions for pulmonary resuscitation, oxygen administration, and airway management.



c

**FERNO<sub>2</sub> Oxygen Management System**

A flexible oxygen delivery system that's always ready both inside your iN|TRAXX-equipped vehicle and on-scene.

- Oxygen Mount, Single iN|TRAXX 0480034
- b** Oxygen Mount, Triple iN|TRAXX 0480035  
(Designed only for EE-Lite® bottles w/540 Post Valve)



d

**Carbon Fiber O2 Bottles**

- DD-Lite® w/870 Post Valve & On/Off Toggle 0819963
- DD-Lite w/540 Post Valve R02060
- EE-Lite w/870 Post Valve & On/Off Toggle 0819964
- c** EE-Lite w/540 Post Valve 0819589
- OR02 Regulator Model 804 0819567

**Green O2 Pressure Hose**

- Female/Female DISS Fitting, 6 ft R02600
- Male NPT, Female DISS Fitting, 6 ft R02610
- DISS Fitting, 20 ft R02620
- d** Model 901 Flow Control Valve w/BARB outlet 0819584



e

**e** FERNO<sub>2</sub> Adult Disposable BVM T30533


**f** Model 301 HFOC Oxygen Conservser

- For NPB PMR-II Adult Bag Resuscitator 0819628
- For 22mm Bag Inlet Ports 0819738

/ For complete product information go to <http://www.fernoems.com/oxygen>



f



An Ambulance is needed, the crew head out on an emergency call hoping they can either help or save a life. Sometimes they don't know what to expect. Sometimes they know exactly what to expect. Either way, it's never without risk.

One of the greatest risks of injuries to crews happens before they even get to the scene. Every year, 4,500 ambulances in the U.S. are involved in a crash, or eight percent of all ambulances on the road.\* Those crashes lead to 1500 injuries involving patients, providers and drivers and 45 fatalities. The costs associated with such crashes are astronomical. Costs our industry simply can't afford.

Below are the top four reasons why crashes occur in the first place and how agencies can help to mitigate those risks.

#### **UNSAFE DRIVING BEHAVIORS**

You train, you retrain, you implement regular reminders of driving best practices. But once that crew hits the road, how much do you really know? Unsafe driving behaviors, most of which are unintentional, account for a majority of vehicle crashes. When you add vehicle weight and size to the mix, the ambulance becomes a potentially lethal object on the road.

Thinking Outside the Box:

---

# **THE TOP FOUR REASONS AMBULANCE CRASHES OCCUR**

## **And How to Mitigate Risk of Injury**

John Kustuch, EMT-P, FF, I/C | Prior Director of Operations for MMR

---

"It's really hard to follow an ambulance and catch someone driving too fast down the road or braking too hard at the intersection. I was a paramedic and I know what you can and can't get away with. Typically, you have to rely on your crews' best behavior," says Dave Grovdahl, Director of LeFlore Co. EMS in eastern Oklahoma.

Vehicle intelligence monitoring systems, such as Ferno's ACETECH Integrated Vehicle Intelligence System, monitor not only the health of the vehicle, but driving behaviors. Unlike other systems which are disciplinary, ACETECH seeks to educate and empower drivers to learn and practice better habits, even warning them of an unsafe behavior before the system records their action for later reporting.

## DELIVERY OF CARE WHILE UNRESTRAINED AND UNSEATED

EMS crews are creatures of habit. Studies have shown paramedics frequently deliver care unseated and unrestrained. Often, the need to help the patient or reach for supplies forces them out of their seats in a mobile environment.

But it doesn't have to.

"We are starting to finally address the situation that we are killing too

many of our own people in wrecks for silly things like not wearing a seatbelt," says Mike McCart, Deputy Chief of Pulaski Co. EMS in Missouri. "So we wanted to design a vehicle that would allow the medic to be restrained at all times, then figure out how they'd be able to access the things they needed most immediately without getting up, and still reach the patient," he added.

***THERE IS A GREATER AWARENESS THAT SOMETHING NEEDS TO BE DONE.***

The resulting solution utilised the Ferno iN|TRAXX Integrated Vehicle Component System. The system features tracks mounted to the ambulance walls with a series of modular, interchangeable SafePak Supply Walls and SafeMount Equipment Mounts, allowing medics to deliver the full range of patient care while seated and restrained. The system also saves agencies money by providing more efficient management of inventory and supplies in a customisable layout.

## UNSECURED EQUIPMENT AND SUPPLIES

One of the most immediate changes an agency can make to help reduce risk is to do an inventory audit. Anything not in a designated mount is a potential projectile and needs to be secured. Equipment like defibrillators, suction pumps, cylinders, and tough books should all be mounted in a secure location for the paramedic's safety.

## CABINET CONTENTS AND STRIKE HAZARDS

The Ambulance Manufacturers Division (AMD) of the National Truck Equipment Association (NTEA) is working in collaboration with NIOSH on developing a cabinet test method to ensure objects inside the cabinet are contained within the enclosure at all

times. This includes anything stored inside a cabinet that could become a projectile during a crash and harm the occupants.

iN|TRAXX minimises the need for cabinets by replacing them with soft-sided, interchangeable storage components and ensuring all equipment is safely secured. The system is dynamically tested and fully compliant to the SAE J3043 testing requirements.

In summary, "There is a greater awareness from regulators that something needs to be done," said Steve Spata, Technical Assistance Director of NTEA. "There have never been federal ambulance standards. That has always been left up to the states, and regulators have to justify any new regulations that they put in place. Now we have the research and the test methods that can be referenced in new regulations," he added. Ferno's Integrated Patient Transport System with iN|TRAXX, iN|X and ACETECH puts the research into practice to keep medics safe and make sure everyone goes home at the end of the day.

**ICE**



### POWERFUL, STABLE PATIENT HANDLING

- **Integrated Loading System**
- **Automatic High-Speed Extend & Retract** feature reduces load and unload time



### INTELLIGENT CONTROLS & OPERATION

- **Programmable Load Height** adjusts to match your ambulance
- **Integrated Charging System** eliminates battery management



### PATIENT CARE, COMFORT & SECURITY

- **Patient Surface is level** at all heights to enhance procedural care



## Ambulances no longer need a tail-lift or ramp to load.

Listening to and working together with paramedics, Ferno built the **only** integrated patient transport and loading system **proven to effectively eliminate lifting**. This revolutionary system does it **all-in-one**.



**Safety and flexibility for any situation.** With the push of a button, the iNjX configures itself to an infinite number of positions allowing you to navigate through diverse environments and provide clinical care in multiple positions.



**Up and over obstacles with confidence.** The independent X-frame design allows you to overcome obstacles with your thumb and not your back and move effortlessly through challenging environments.

**See and Be Seen.** The Integrated Lighting System features continuous and flashing modes for dark or hazardous conditions.



## iNjLINE™

### Fastening System for iNjX

Full SAE compliance when combined with iNjX.

- In-line design eliminates the need to steer the cot when loading and unloading
- Accommodates extreme loading and unloading approach angles
- ICS® Integrated Charging System™ keeps the iNjX powered on every call

iNjLINE Short (86")

ILFS86

iNjLINE Medium (95")

ILFM95

iNjLINE Long (102")

ILFL102

Ask for Floor Plate Adapter Kit when ordering iNjLINE



## iNjX® Integrated Patient Transport & Loading System



iNjX for iNjLINE Fastener

0015803

IV Pole

LAIV3SCL

PacRac+

FWEPR

SofNet

0822453

SX Surface Extenders

FWESX

/ For complete product information  
go to <http://www.fernoems.com/inxsystem>



# POWERX

Designed to minimise weight, maximise manoeuvrability and incorporate all the functionality required from a **new generation ambulance trolley**



\*The National Highway Traffic Safety Administration and Ground Ambulance Crashes presentation, April 2014 — available at [www.ems.gov](http://www.ems.gov).  
†Traditional "antler and rail" cot fastener systems will no longer be compliant for use in new ambulances contracted for purchase after July 1, 2015 (based on KKK-1822-F, change notice 8 which references SAE J3027).



# Be Compliant. Stay Safe.



Data shows that ambulance transport carries a higher risk of injury than other industries.\*

This inspired a team of industry and federal partners, including NIOSH, NIST, and DHS, to develop new ambulance safety standards. The result is new recommended practices from the Society of Automotive Engineers (SAE) for testing the crash worthiness of ambulance cots (SAE J3027) and ambulance equipment (SAE J3043). SAE's guidelines specify the equipment design parameters for occupants to survive a 30 MPH vehicle crash (the equivalent of a 22.5g forward impact and 26g side impact).

Ferno's iN|LINE and Two Part Lock Fastener Systems have been dynamically tested and are fully compliant with CEN standards and SAE ambulance safety requirements.†



PUSH-POLES



PACRAC+



SIMPLE CONTROLS



CD/ZA O2 cylinder holder

Standing still is not a part of the FERNO Way, ever continuing to invent and develop. Now we are proud to introduce our latest offering – **PowerX**

*We listened to feedback from end users to develop the lightest powered trolley on the pre-hospital market, ergonomically designed for enhanced handling and manoeuvrability, making it easier and safer for the operator and improving patient outcome.*

*Configurable and feature-rich in design, with the latest technology at your fingertips PowerX addresses and fulfils the needs of today's ambulance trolley.*

**Reduced weight**

**Enhanced manoeuvrability**

**Minimised in form, but not in function**

**Power that is dependable and reliable**

**First-rate in confined spaces**

**Flexible functionality**

**Integrated infection control**

PowerX

0015803



## Two Part Lock

The ALL-IN-ONE Locking Systems for **ALL** FERNO Patient Transport Trolleys

Two Part Lock

TBC

**n.b. The iNX Patient Loading System and iN|LINE Fastener are an integral part and do not require or work with a two part lock.**

UK Range of Ambulance Trolleys  
are engineered to exacting  
standards - to meet the high  
demands of one of the worlds  
busiest emergency services

### HARRIER LT LBS

Powered, bariatric and  
made of strong stuff



### MEGASUS

Standing the test of time this  
was the first large body trolley



### PEGASUS

Proven, versatile and built to last





## ITU

The ultimate in transfer safety



## CCT

Bespoke engineering to meet the measure





**COMBINE THE POWERTRAXX  
WITH THE iNFX AND POWEX FOR  
EASY LATERAL TRANSFERS AND  
A TRUE NO-LIFT SOLUTION IN  
ANY SITUATION.**



# EZGlide® and POWERTraxx™

## Stop Carrying.

A patient falls in her 4th floor apartment, and there is no elevator in the building. A cot won't help you but the POWERTraxx will.

The EZ Glide Stair Chair glides patients down stairs without carrying or lifting. Add POWERTraxx to power the load up stairs too. The chair and track system carry the weight, not the medic, reducing fatigue and risk of injury.



- **One-Inch Track Ground Clearance** provides smooth rolling over carpet and rough surfaces
- **Five-Position Lift Bar and Handles** reduce strain and provide maximum control for operators of various heights
- **Up to 500 lb Weight Capacity** way above standard
- **Wireless Controller** keeps your hands on the chair, so you're always in control
- **Upgrade Your Existing EZ Glide** with the PowerTraxx conversion kit
- **The EZ Glide LBS** Larger Body Surface **extends the weight capacity to 700 lb** and can be used as an in-vehicle patient seat when used with NMI Saferider restraint system in conjunction with Pocket Lock or Unwin Strap System

- b** EZ Glide w/ POWERTraxx PT5910
- c** EZ Glide Stair Chair PT5900
- d** EZ Glide LBS (Biosafe 4 point harness, with extended foot bar) 073132930

- POWERTraxx Conversion Kit 0832195
- EZ Glide IV Pole CA5904
- EZ Glide Headrest Kit 0822430
- EZ Glide Oxy-Clip2™ O2 Bottle Holder CA5903
- Locking Rear Handles 0821975
- EZ Glide Secure Mount 0822072
- EZ Glide Secure Mount Locking Bracket 0822096
- Wall Bracket 0822073

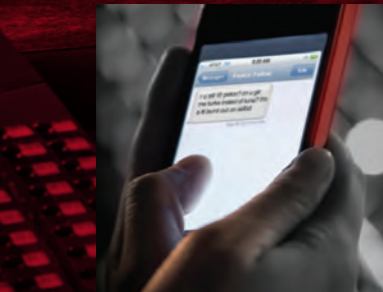
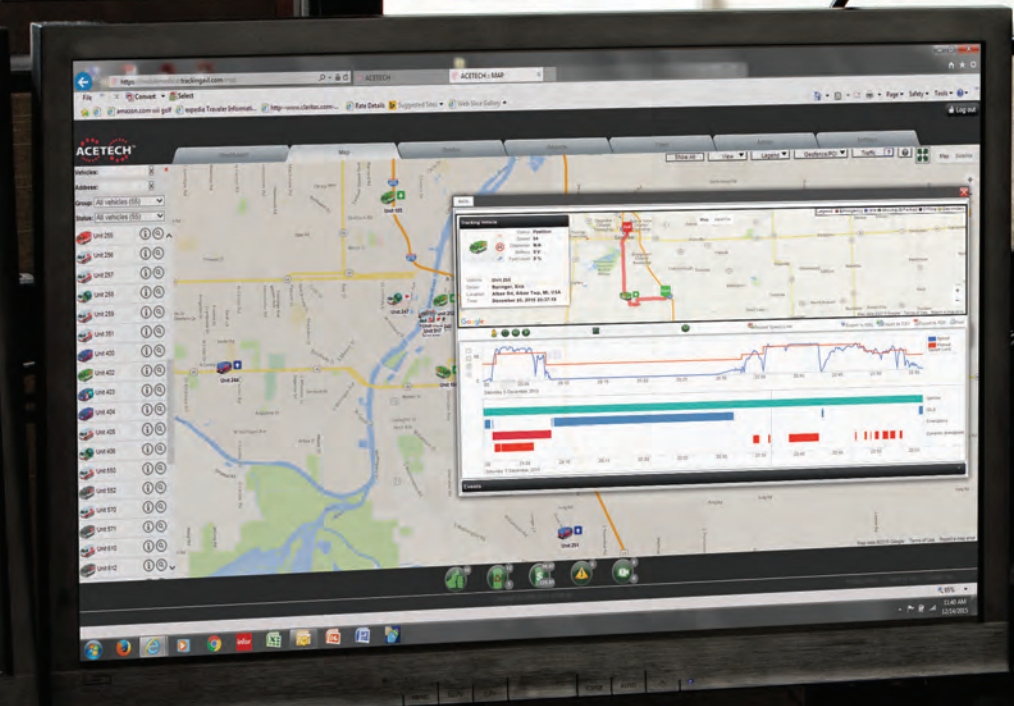
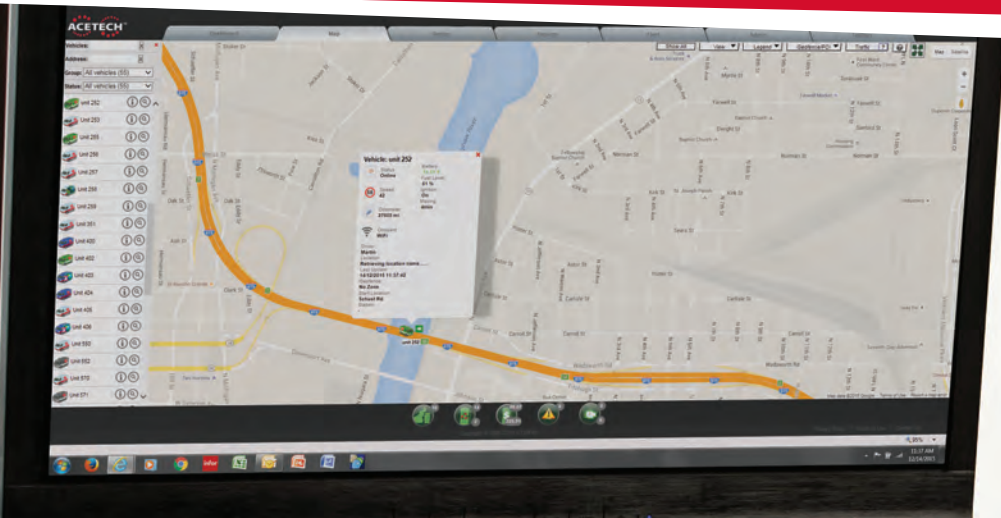
## EZGlide LBS®

### Compact2Track™

Combining the features of a carry chair and track chair in one product reduces manual handling risks, reduces the weight of equipment operators have to carry, decreases the equipment weight in the vehicle and frees-up available space, which all ultimately lead to cost savings.



- Compact 2 Track (with Biosafe restraints) 071481450
- In-vehicle storage bracket for Compact 2 Track 009103800



**RECEIVE TEXT ALERTS ON VEHICLE STATUS, AGGRESSIVE DRIVING AND OTHER BEHAVIORS THAT LOWER FUEL ECONOMY AND PLACE UNDUE WEAR ON VEHICLES.**



Integrated Vehicle Intelligence System

## Intelligence & Insight at the Moment it Matters Most

Now, you can **take control** of every aspect  
**of your fleet** operations.

ACETECH is a **fully integrated, customisable** vehicle intelligence solution that provides a steady stream of **real-time information** on operational performance, driving behaviors, response times and more. ACETECH hardware modules capture data and send it to the ACETECH Cloud Server, where it is integrated into over 30 customisable web-based ACETECH Insight Reports that can be accessed through your desktop and CAD, and even via text alerts and email.

**Make better decisions** for your operations, increase the **health and performance** of your organisation, and address **unsafe driving** behavior before they become bigger, more costly problems.

### ACETECH INSIGHT REPORT DATA-STREAMS INCLUDE

- Real-Time GPS Location and Speed
- Driver Log-in
- G-Force Accelerometer
- OEM Odometer and Fuel Level
- OBDII Engine Diagnostics
- Battery Monitoring
- Emergency Light and Siren Detection
- Brake, Turn Signal and Reverse Usage





## Prevent Accidents Before They Happen

ACETECH allows you to monitor and change driving behavior to protect crews, patients, and the public from adverse events.

**SAFETY** Prevent accidents with dynamic views and alerts on vehicle system status and driving behaviors.

**JOURNEYS** Recall and replay call routes for quality assurance and risk management.



## Take Control

Easily customise your vehicle electronics with programmable on-board multiplexing that put you and your crews in control of vehicle safety and operations.

- **Touch screen controls** with multiplexing provide easy configuration and control of vehicle electronics and HVAC.
- **Individual Driver key FOBs** allow for personalised settings and tracking.
- **WIFI and SIM cards keep your equipment connected** for communications to dispatch and hospitals while the vehicle is in motion.





## Save Money and Improve Response Times

ACETECH helps lower operational costs by reducing fuel consumption and preventable downtime. You can also more effectively manage people and assets to increase operational efficiency and shorten response times.

**FUEL REPORTS** Lower your monthly fuel costs by monitoring excessive idling.

**MAINTENANCE** Prevent unscheduled downtime with PM management and vehicle system alerts.

**DEPLOYMENT** Optimise deployment and journeys with Interactive Map Views, Geo Fencing and run reports.

**PERFORMANCE** Customise Key Performance Indicators (KPIs) to track and improve operational functions.



/ To learn more about Ferno ACETECH, go to <http://www.fernoacotech.com>



# KangooFix

**Safe & effective transportation of mother and baby together on one trolley, eliminating the need to use two Ambulances & crew**

**KangooFix Paediatric Ambulance Restraint System** - designed and developed to safely and effectively envelop and harness a NEWBORN during ambulance transportation, allowing baby to travel with their mother, maintaining close contact at all times.



CERTIFIED EN 1789 COMPLIANT  
**10g**

For complete product information, go to <http://www.ferno.co.uk>

<b>Ferno KangooFix</b> paediatric restraint system and bag Includes; KangooFix paediatric outer harness, inner harness, warming cover with skullcap, neck/back support plate	15 271 000 819
<b>Limited-use replacement kit (maximum 5 uses)</b> KangooFix inner harness with warming cover and skullcap	15 271 000 826
<b>Other replacement items</b> KangooFix paediatric outer harness	15 271 000 821
KangooFix head/back support plate	15 271 000 824

## Child Transportation Any Challenge Met.

The most difficult calls are for our smallest patients and no parent or transport provider wants to see a child hurt or unsecured.



Pedi Mate Plus



Pedi Mate



NeoMate

### Paediatric Transport & Immobilisation

Ferno wants to make sure you are prepared for any patient and the Pedi Mate®, Neo Mate® and Medikids® Restraint Series provides a quick and efficient way to secure paediatric patients (7-80 lbs) onto the ambulance trolley without having to purchase additional equipment or seats.

- Each restraint is fully adjustable with a five-point harness system that securely holds the patient
- Rolls up compactly for convenient storage and easy deployment
- Vinyl construction is nontoxic and easy-to-clean

- A** Pedi Mate Plus (for patients 10-80 lbs) 031377901
- B** Pedi Mate (for patients 10-40 lbs) 031377801
- C** Neo Mate (for patients 7-14 lbs) 031-4116



Medikids® Pedi-Sleeve  
031392300



Medikids® Baby Board  
031392200



Pedi-Pac® Immobilisation System 031306500

For complete product information go to  
<http://www.ferno.co.uk>

TOGETHER  
WE CAN MEET  
ANY CHALLENGE

## EasyFix PLUS



### Kendrick Extraction Device (K.E.D.®)

The Ferno K.E.D. combined with the Scoop EXL Stretcher helps you quickly extricate the patient and minimize movements that can cause further injury.

K.E.D.

IE1250

### EasyFix PLUS

Provides an effective and secure vacuumed environment for a safer transfer of casualties.

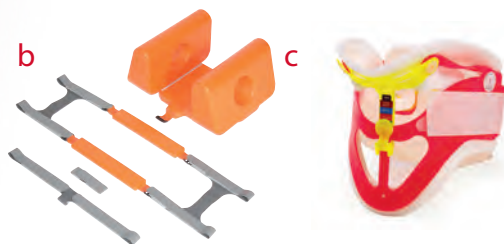
Designed for use in both rescue and medical situations, the EasyFix PLUS vacuum mattress raises the level in patient immobilisation and transportation equipment, allowing a patient to be moved from scene all the way through to scanner without the need to transfer between different devices, in all environments and situations.

- **Durable and highly effective** – base fibreglass material reduces friction making surface movement of the mattress easier
- **Integrated immobilisation** – integral head straps designed to remain in place

EasyFix PLUS Vacuum Mattress

271511000

EasyFix range includes arm and leg splints and a paediatric full body mattress



b CHI Combi Head Immobiliser

031271300

c WizLoc™ Cervical Collar (3/pack)

081964600

# Extrication & Immobilisation

Challenging trauma calls require the right tools for fast, safe, and effective extrication and immobilisation of adult and pediatric patients.



## Scoop EXL™ Stretcher

Many situations require minimising patient movement to reduce pain and situations that can cause further injury. The Ferno Scoop EXL allows you to gently scoop a patient without lifting or log rolling and is proven to reduce movement to a patient's cervical spine.



- Narrow foot-end and split-apart design provide easier use in confined space immobilisation
- Double-locking aluminum hinge at both ends allows either end or both ends to come apart
- X-ray translucent

Scoop® EXL, Yellow, with pins, no restraint straps 00108002-R  
Scoop® EXL, Red, with pins, 4 Speedclip Biosafe straps 010803800/BIO



## Millennia Backboard

Made from lightweight, foam-filled ABS plastic, the boards are X-ray translucent plus non-slip and smooth for easy patient transfer.

- Sealed to resist fluids, chemicals and heat
- Tapered design for easy handling in confined spaces
- Wider, longer hand-holds to improve control
- Suitable to fit inside the; Model 71, Gazelle and Titan 32 Basket Stretchers

Millennia Backboard – 18" c/w Speedclips 010776702



## FRAC Straps & Immobilisers

Effective strapping and box splints for suspected fractures at the scene of an accident.

Frac Straps Pack 031352501  
Frac Immobiliser 2 Strap Child 031346901  
Frac Immobiliser 4 Strap Short Leg or Arm 031347201  
Frac Immobiliser 5 Strap Adult 031347301





**b**



**c**

### Basket Stretchers

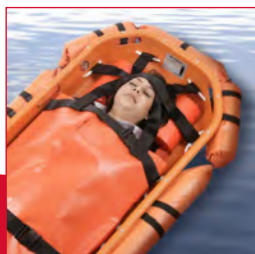
When the patient is out of the way in rough terrain, Basket Stretchers help you secure the patient and get in and out of the scene quickly and safely.

- b Model 71 Basket Stretcher** 010710002  
 Model 71-M Non-Magnetic 010710401  
 Model 71-S Two-Piece 010710102
- c Titan Titanium Regular** 11-0116SL  
 The Titan Range is available either in steel or titanium and comes tapered, split or wide - please ask.

#### ACCESSORIES AVAILABLE

All Basket Stretchers have a full range of Lifting Bridles, Flotation Collars and other essential items

For complete product information go to  
 / <http://www.ferno.co.uk/rescue>



### The Porter 2-wheeled Litter Carrier

Universal design that is compatible with all types and styles of ridged litters and features 8 adjustable handles for varying operator heights and ease of maneuverability.

- **Fast ratchet securing system**
- **Quick release pins**
- **Folds down for easy storage & transport**

Porter 2-wheeled Litter Carrier 11-2224  
 Storage Bag for Porter Litter Carrier 031357700





### Trauma Bags

You carry a lot on your shoulders and it's important to have everything you need for any situation. Ferno's Trauma and O2 Bags provide multiple configurations for customized organization of your trauma supplies. Every bag is built for years of use under all conditions and is backed by a limited lifetime warranty.

- INVISTA™ Cordura® construction, YKK® zippers, and dual-density, Plastizote® structural foam ensure long life and dependable performance
- Removable stiffeners and inserts allow custom configurations
- Concealed non-slip shoulder straps keep the bag on your shoulder
- Reflective labels provide nighttime visibility
- Replaceable bottom protects the bag and its contents from wet ground
- Bags available in red or blue

b	5107 Professional Trauma Bag	MB5107
c	5108 Professional ALS Bag	MB5108
d	5111 Trauma/Air Management Bag III	MB5111

/ For the full line of Ferno Bags go to <http://www.fernoems.com/traumabags>



# UK Stretcher Trolley Range



KEY FEATURES	iNjX System	PowerX	Pegasus	Megasus
Lifting	Powered	Powered	Hydraulic	Hydraulic
Loading System	Integrated	Tail Lift or Ramp	Tail Lift or Ramp	Tail Lift or Ramp
Charging	Integrated	Detachable Battery	N/A	N/A
Battery Type	36V Lithium Ion	28V Lithium Ion	N/A	N/A
Leg Movement	Independent	X Frame	X Frame	X Frame
Lighting	☐	☐		
Bariatric Capability	Using SX Cotsides	Using SX Cotsides		☐
Chair Position	☐			
Height Fully Raised	1245 mm	880 mm	880mm	880 mm
Height Lowest Position	356 mm	480 mm	460 mm	460 mm
Length Fully Extended	2045 mm	1930 mm	1950 mm	1950 mm
Length Fully Shortend	1594 mm	1450 mm	1450 mm	1680 mm
Width	597 mm	570 mm	570 mm	fully Extended 955 mm
SWL Raised Position	318 kg	300 kg	200 kg	200 kg
SWL Lowest Position	318 kg	400kg	300 kg	400 kg
Weight	83 kg	67 kg	65 kg	73 kg
Level Patient Surface	☐	☐	☐	☐
Harness System	Biosafe Easy Clean	Biosafe Easy Clean	Biosafe Easy Clean	Biosafe Easy Clean
Cotsides	SX Cotsides	Lateral Folding or SX Cotside	Swing Down Cotside	Swing Down Cotside
Anti Bacterial Pressure Reducing Mattress	☐	☐	☐	☐
Locking System	INLINE	Two Part Lock	Two Part Lock	Two Part Lock
CEN Compliant	☐	☐	☐	☐

## Chairs



KEY FEATURES	EZ Glide PowerTraxx	EZ Glide 59T	EZ Glide LBS	Compact 2 Track
Principle Use	Powers Up/Down Stairs	Down Stairs	Bariatric Down Stairs	Multi-Functional
Built in stair top stop feature	☐	☐	☐	☐
Speed control	☐			
Adjustable Height Head End Handle	☐	☐	☐	☐
Telescoping Foot End Handle	☐	☐	☐	
Detachable Track				☐
Height	953 mm	953 mm	950 mm	1062 mm
Height With Handle Fully Deployed	1613 mm	1613 mm	1610 mm	1445 mm
Width	516 mm	516 mm	595 mm	450 mm
Depth	1295 mm	724 mm	850 mm	950 mm
Weight	26 kg	17 kg	29 kg	15 kg
Folded L x W x D	953/516/254 mm	953/516/250 mm	Fixed Frame	810/450/295 mm
Patient Weight Capacity	227 kg	227 kg	318 kg	200 kg
Battery Type	28V Lithium Ion			



## Fasteners



Harrier LT LBS	CCTP	ITU
Powered	N/A	N/A
Tail Lift or Ramp	Tail Lift or Ramp	Tail Lift or Ramp
Detachable Battery	N/A	N/A
28V Lithium Ion		
X Frame	Fixed Frame	Fixed Frame
<input type="checkbox"/>	CCT Megasus	
925 mm	780 mm	615 mm
480 mm		
1930 mm	1930 mm	1830 mm
1610 mm		
fully Extended 955 mm	555 mm	545 mm
350 kg	181 kg	140 kg
400 kg		
69 kg	76.3 kg	48 kg
<input type="checkbox"/>	<input type="checkbox"/>	<input type="checkbox"/>
Biosafe Easy Clean	Biosafe Easy Clean	N/A
Swing Down Cotside	Swing Down Cotside	N/A
<input type="checkbox"/>	<input type="checkbox"/>	N/A
Two Part Lock	Two Part Lock	Two Part Lock
<input type="checkbox"/>	<input type="checkbox"/>	<input type="checkbox"/>

KEY FEATURES	iNfLINE Fastener	Two Part Lock
Compatible Trolley/Systems	iNfX	ALL
Integrated Charging	<input type="checkbox"/>	
No Steering Cot	<input type="checkbox"/>	
Accommodates load angles	<input type="checkbox"/>	
Short Length	2184 mm	
Medium Length	2413 mm	
Long Length	2591 mm	
CEN Compliant	<input type="checkbox"/>	<input type="checkbox"/>

## Stretchers



DIMS	Scoop EXL Stretcher	Model 71 Basket Stretcher	Titan Titanium Regular	Millennia Backboard
Length	1651 - 2007 mm	2183 mm	2120 mm	1800 mm
Length - Folded	1194 mm	N/A	N/A	N/A
Depth	76 mm	203 mm	180 mm	45 mm
Width	432 mm	610 mm	580 mm	457 mm
Weight	8.1 kg	10.4 kg	6.7 kg	6 kg
Load Limit	159 kg	272 kg	1136 kg	159 kg

## Bags



DIMS	5107 Trauma Bag	5108 ALS Bag	5111 Trauma/O2 Bag III
Height	381 mm	381 mm	317.5 mm
Length	559 mm	559 mm	660 mm
Width	305 mm	305 mm	470 mm

# Trolley & Systems

## iNjX



- **Three-Stage IV Pole** allows you to quickly place an IV bag anywhere around the patient  
No. LAIV3SCL



- **PacRac+ Equipment Mount** provides support to any patient monitor. The pivoting side supports allow patient transfer without removing the PacRac+  
No. FWEPR



- **Storage Net** allows you to stow items while moving the iNjX  
No. 8022453



- **SX Surface Extender** provides added comfort and security for patients of any size  
No. FWESX

## PowerX



- **Three-Stage IV Pole** allows you to quickly place an IV bag anywhere around the patient  
No. LAIV3SCL



- **PacRac+ Equipment Mount** provides support to any patient monitor. The pivoting side supports allow patient transfer without removing the PacRac+  
No. FWEPR



- **Storage Net** allows you to stow items while moving  
No. 8022453



- **Push/Pull Handles**  
No. XXXXXXXX



- **Side Fixing Manoeuvring Handles**  
No. XXXX



- **SX Surface Extender** provides added comfort and security for patients of any size  
No. FWESX

## Pegasus



## Megasus



## Harrier LT LBS



- **ABPR Mattress & Pillow**  
No. XXXXX



- **PacRac Equipment Platform**  
No. 0818933



- **Oxy Clip**  
No. 0085500



- **Dust Covers**  
No. XXXXXXXX



- **Inflatable Side Arms**  
No. XXXXXX



- **Milwaukee Battery and Charger**  
No. XXXXXX



- **Clip Doc**  
No. XXXXXX



- **513-13 IV Pole**  
No. 008172

# Chairs



## POWERTraxx

### STORAGE



- EZ Glide Secure Mount  
No. 0822072



- Storage Cover  
No. 0314023



- EZ Glide Wall Mount  
No. 0822096

### PATIENT HANDLING



- EZ Glide Headrest  
No. 0822430



- EZ Glide IV Pole  
No. 0821976



- Oxy-Clip O2 Bottle Holder  
No. 0821977



- EZ Glide Rear Handles  
No. 0821975



- EZ Glide Headrest Pouch  
No. 0314117



- PowerTraxx Battery Charger  
No. 0832199  
Battery No. 0832198



## EZ Glide

## EZ Glide LBS



### STORAGE



- EZ Glide Secure Mount  
No. 0822072



- Storage Cover  
No. 0314023



- EZ Glide Wall Mount  
No. 0822096

### PATIENT HANDLING



- EZ Glide Headrest  
No. 0822430



- EZ Glide IV Pole  
No. 821976



- Oxy-Clip O2 Bottle Holder  
No. 0821977



- EZ Glide Rear Handles  
No. 0821975



- EZ Glide Headrest Pouch  
No. 0314117



Products depicted in images and product specifications are subject to change. Contents herein are trademarks or registered trademarks of Ferno-Washington, Inc. Laerdal® is a registered trademark of Laerdal. Toughbook® is a registered trademark of Panasonic. iPad® is a registered trademark of Apple, Inc. ©2016 Ferno.